

Remembering Professor Steven Schinke: Virtual Memorial Service

Click this link to join the virtual memorial service:

<https://columbiasocialwork.adobeconnect.com/rememberingstevenschinke?proto=true>

Need help?

Please review this full guide for step by step details of how to log in to the online memorial. For additional assistance, a technical support email address can be found on the last page.

How to log in



1. Click on "Guest"

Guest Registered User

2. Type your name here

Name
Type here

3. Click "Enter Room"

Enter Room

By entering a Name & clicking "Enter Room", you agree that you have read and accept the [Terms of Use](#) & [Privacy Policy](#)

If you get the message “Virtual Memorial Service Did Not Open”

If you get the message that the virtual memorial service did not open:

1. Click “Download Adobe Connect Application”

or

2. Click “join with classic view” to open Adobe Connect in your browser instead of downloading the application

Note: Classic view is not recommended with the Chrome Internet browser

Remembering Professor Steven Schinke: Virtual Memorial Service Did Not Open?

You need to install and join via Adobe Connect desktop application.

[Download Adobe Connect Application](#)

Enable Adobe Flash Player in your browser to [join with classic view](#). Follow the steps listed here - [Adobe Flash Player Help](#)

Questions? See [Troubleshooting Tips](#)

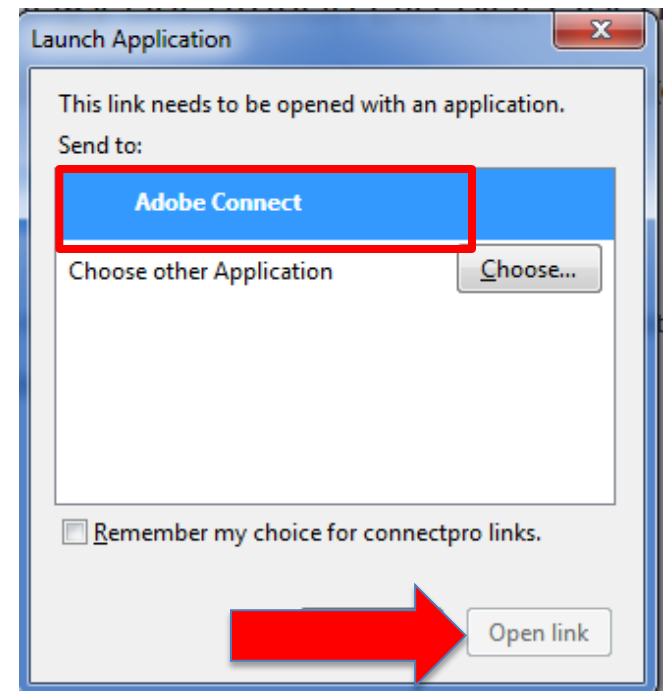
Firefox - Launching the Adobe Connect Application

When you log into a classroom after installing the Adobe Connect Application, your browser will provide you with a popup asking you to confirm that you want to launch the application.



Firefox

Highlight "Adobe Connect" in the Launch Application pop-up and then click "Open Link."



Chrome - Launching the Adobe Connect Application

When you log into a classroom after installing the Adobe Connect Application, your browser will provide you with a popup asking you to confirm that you want to launch the application.



Chrome

Click "Open URL: Adobe Connect"

Open URL:Adobe Connect?

Always open these types of links in the associated app



Open URL:Adobe Connect

Cancel

Safari - Launching the Adobe Connect Application

When you log into a classroom after installing the Adobe Connect Application, your browser will provide you with a popup asking you to confirm that you want to launch the application.



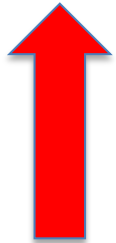
Safari

Click "Allow"

Do you want to allow this page to open "Adobe Connect"?

Cancel

Allow



Need help?

If you need technical support:

Send an email to swonline-help@columbia.edu.

In your email, please:

1. Note that you are trying to join the Virtual Memorial Service
2. Describe the technical problem
3. (optional) Include a screenshot of the problem or error message